



Department of Public Works
Engineering Division
 Robert F. Phillips, P.E., City Engineer

City-County Building, Room 115
 210 Martin Luther King, Jr. Boulevard
 Madison, Wisconsin 53703
 Phone: (608) 266-4751
 Fax: (608) 264-9275
engineering@cityofmadison.com
www.cityofmadison.com/engineering

Deputy City Engineer

Gregory T. Fries, P.E.

Deputy Division Manager

Kathleen M. Cryan

Principal Engineer 2

Christopher J. Petykowski, P.E.
 John S. Fahrney, P.E.

Principal Engineer 1

Christina M. Bachmann, P.E.
 Mark D. Moder, P.E.
 Janet Schmidt, P.E.

Facilities & Sustainability

Jeanne E. Hoffman, Manager
 Bryan Cooper, Principal Architect

Mapping Section Manager

Eric T. Pederson, P.S.

Financial Manager

Steven B. Danner-Rivers

February 17, 2021

NOTICE OF ADDENDUM
 ADDENDUM NO. 1
 CONTRACT NO. 8988

RESURFACING 2021 – CURB & GUTTER AND CASTINGS

Revise and amend the contract document(s) for the above project as stated in this addendum, otherwise, the original document shall remain in effect.

SECTION A: ADVERTISEMENT FOR BIDS AND INSTRUCTIONS TO BIDDERS:

Remove and replace with attached Page A-1. The bid submission date and other dates are revised.

PROPOSAL:

See below for a summary of items that have been removed, added or revised. Refer to the proposal for updated quantities. See proposal on bidexpress.com.

ITEMS:

Action	Bid Item	Description
MODIFY	50741	TYPE H INLET
MODIFY	40364	ADJUST INLET CASTING, TYPE "H", RESURFACING
ADD	50442	10 INCH TYPE III STORM SEWER PIPE
MODIFY	50723	3'X3' STORM SAS
MODIFY	50792	STORM SEWER TAP
MODIFY	50225	UTILITY TRENCH PATCH TYPE 3

PLANS:

Remove and insert revised plan sheets as noted below.

REPLACE SHEET D-1 (REV 2-17-21): Added notes
REPLACE Sheet P-3 (REV 2-15-21): Updated curb & sidewalk replacement with proposed grades.
ADD sheet U-2A (REV 2-16-21): Added storm sewer pipe from approx. STA 36+85 to STA 39+30
REPLACE Sheet U-5 (REV 2-16-21): Updated schedule to reflect changes on sheet U-2A

Please acknowledge this addendum on page E1 of the contract documents and/or in Section E: Bidder's Acknowledgement on Bid Express.

Electronic version of these documents can be found on the Bid Express web site at:

<http://www.bidexpress.com>

If you are unable to download plan revisions associated with the addendum, please contact the Engineering office at 608-266-4751 receive the material by another route.

Sincerely,

A handwritten signature in black ink, appearing to read "Robert Phillips". The signature is written in a cursive style with large, looping letters.

Robert F. Phillips, P.E.
City Engineer

RFP:JMW

SECTION A: ADVERTISEMENT FOR BIDS AND INSTRUCTIONS TO BIDDERS

REQUEST FOR BID FOR PUBLIC WORKS CONSTRUCTION CITY OF MADISON, WISCONSIN

A BEST VALUE CONTRACTING MUNICIPALITY

PROJECT NAME:	RESURFACING 2021 - CURB & GUTTER AND CASTINGS
CONTRACT NO.:	8988
SBE GOAL	2%
BID BOND	5%
SBE PRE BID MEETING	See Pre Bid Meeting info below
PREQUALIFICATION APPLICATION DUE (2:00 P.M.)	2/18/2021
BID SUBMISSION (2:00 P.M.)	2/25/2021
BID OPEN (2:30 P.M.)	2/25/2021
PUBLISHED IN WSJ	2/4/2021 & 2/11/2012

SBE PRE BID MEETING: Small Business Enterprise Pre-Bid Meetings are not being held in person at this time. Contractors can schedule one-on-one phone calls with Juan Pablo Torres Meza in Affirmative Action to count towards good faith efforts. Juan Pablo can be reached at 608-261-9162 or by email, jtorresmeza@cityofmadison.com.

PREQUALIFICATION APPLICATION: Forms are available on our website, www.cityofmadison.com/business/pw/forms.cfm. If not currently prequalified in the categories listed in Section A, an amendment to your Prequalification will need to be submitted prior to the same due date. Postmark is not applicable.

BIDS TO BE SUBMITTED: by hand to 1600 EMIL ST., MADISON, WI 53713 or online at www.bidexpress.com.

THE BID OPENING is at 1600 EMIL ST., MADISON, WI 53713.

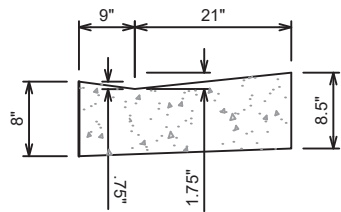
The process for submission of bids has not changed. Bids may be submitted on line through Bid Express or in person at 1600 Emil St. Please note that the doors at 1600 Emil St. are locked, but there is a sign with phone numbers on the door. Please call one of the numbers and staff will come to the door to get your bid. Until further notice, the bid openings will be closed to the public to support the guidance of social distancing as the City responds to responsively to COVID-19 impacts to services. The bids will be posted on line after the bid opening. If you have any questions, please call Alane Boutelle at 608-267-1197, or John Fahrney at 608-266-9091.

STANDARD SPECIFICATIONS

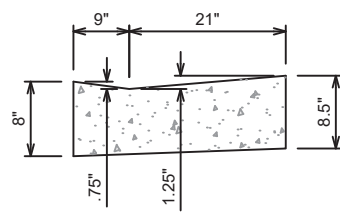
The City of Madison's Standard Specifications for Public Works Construction - 2021 Edition, as supplemented and amended from time to time, forms a part of these contract documents as if attached hereto.

These standard specifications are available on the City of Madison Public Works website, www.cityofmadison.com/Business/PW/specs.cfm.

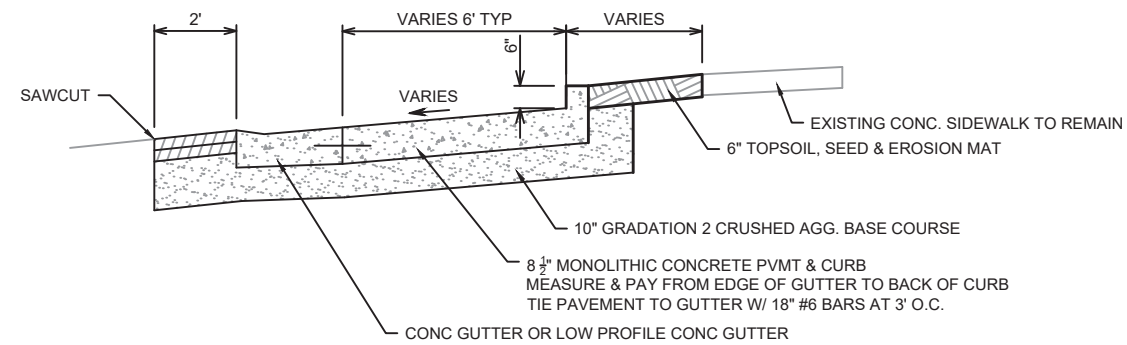
The Contractor shall review these Specifications prior to preparation of proposals for the work to be done under this contract, with specific attention to Article 102, "BIDDING REQUIREMENTS AND CONDITIONS" and Article 103, "AWARD AND EXECUTION OF THE CONTRACT." For the convenience of the bidder, below are highlights of three subsections of the specifications.



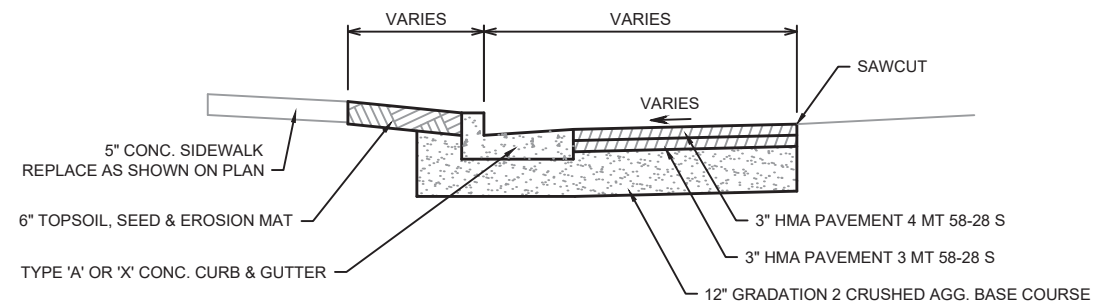
CONCRETE GUTTER DETAIL
STA 54+54 TO 58+35
NOT TO SCALE



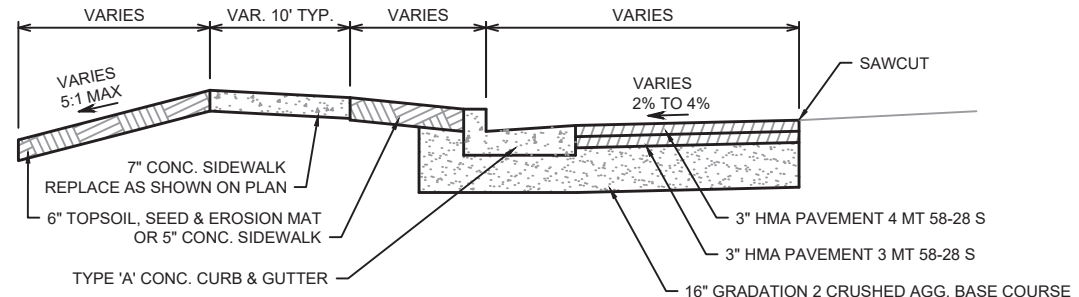
CONCRETE GUTTER - LOW PROFILE DETAIL
STA 58+35 TO 59+07
NOT TO SCALE



8 1/2" MONOLITHIC CONCRETE PAVEMENT & CURB DETAIL
STA 54+54 TO STA 59+07
NOT TO SCALE



E. GORHAM ST. BUMPOUTS & WIDENING TYPICAL SECTION
STA 12+75 TO 59+25
NOT TO SCALE



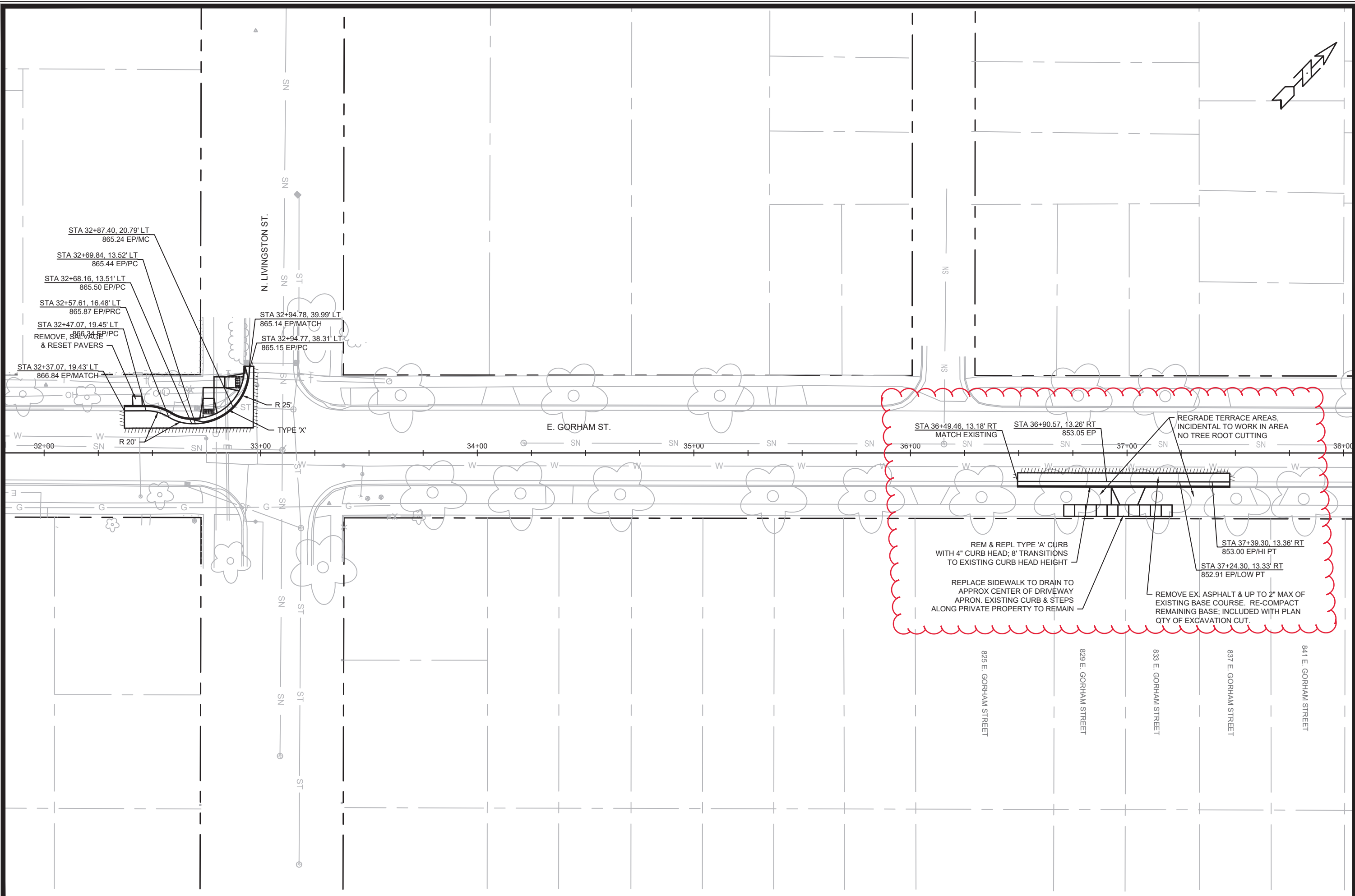
E. GORHAM ST. BUMPOUT TYPICAL SECTION
STA 65+13 TO 66+57
NOT TO SCALE

NOTES:
1. ALL ASPHALT TO BE PLACED BY OTHERS UNDER CONTRACT 8989. CONTRACTOR SHALL COORDINATE WORK AS NECESSARY IN ORDER TO MEET REQUIREMENTS OF SPECIAL PROVISIONS. WHERE REQUIRED, CONTRACTOR SHALL PLACE CURB FRONT FILL IN SELECT LOCATIONS AS DIRECTED BY THE ENGINEER.
2. SAWCUT LIMITS SHOWN ARE APPROXIMATE. CONTRACTOR SHALL WORK WITH CONSTRUCTION ENGINEER TO DEFINE LIMITS IN THE FIELD SUCH THAT ALL CURB CAN BE INSTALLED AT PROPOSED GRADES WHILE ALSO MEETING REQUIREMENTS OF THE SPECIAL PROVISIONS.

13253	13253	13253	13253
MADISON, WI	MADISON, WI	MADISON, WI	MADISON, WI
CONTRACT NO: 8988 & 8989	CONTRACT NO: 8988 & 8989	CONTRACT NO: 8988 & 8989	CONTRACT NO: 8988 & 8989
13253	13253	13253	13253
D-1	D-1	D-1	D-1



13253
D-1



STA 32+87.40, 20.79' LT
 865.24 EP/MC
 STA 32+69.84, 13.52' LT
 865.44 EP/PC
 STA 32+68.16, 13.51' LT
 865.50 EP/PC
 STA 32+57.61, 16.48' LT
 865.87 EP/PRC
 STA 32+47.07, 19.45' LT
 866.34 EP/PC
 REMOVE, PATCH
 & RESET PAVERS
 STA 32+37.07, 19.43' LT
 866.84 EP/MATCH
 STA 32+94.78, 39.99' LT
 865.14 EP/MATCH
 STA 32+94.77, 38.31' LT
 865.15 EP/PC

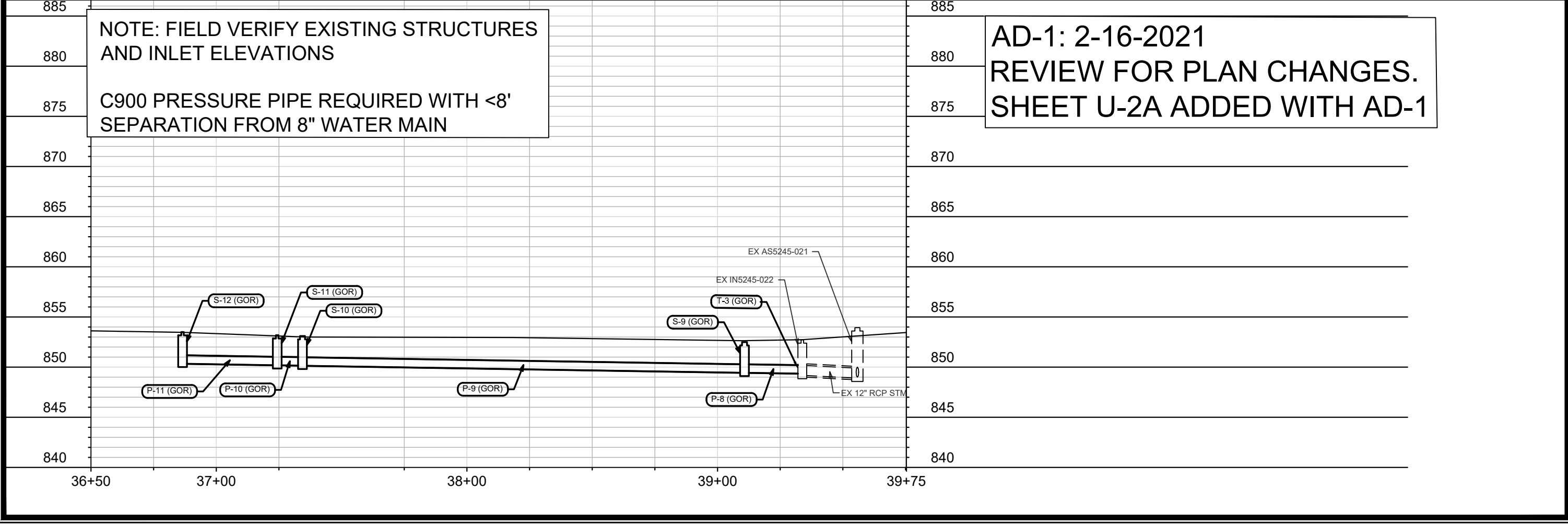
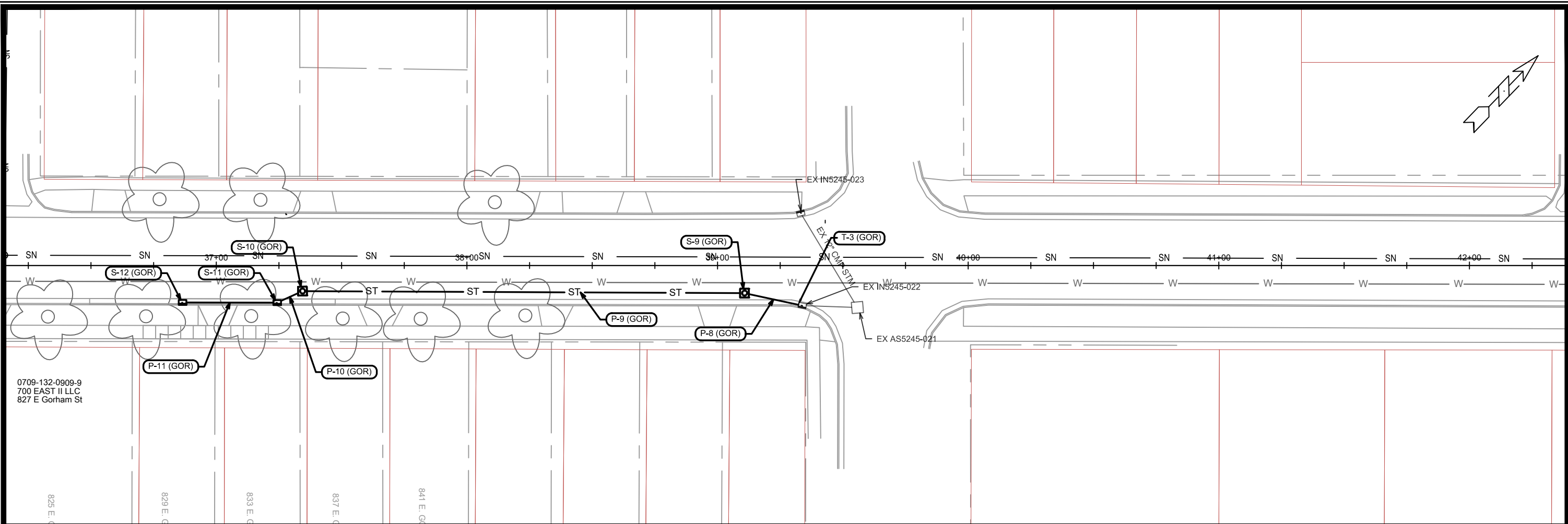
STA 36+49.46, 13.18' RT
 MATCH EXISTING
 STA 36+90.57, 13.26' RT
 853.05 EP
 REGRADE TERRACE AREAS,
 INCIDENTAL TO WORK IN AREA
 NO TREE ROOT CUTTING
 STA 37+39.30, 13.36' RT
 853.00 EP/HI PT
 STA 37+24.30, 13.33' RT
 852.91 EP/LOW PT
 REM & REPL TYPE 'A' CURB
 WITH 4" CURB HEAD; 8" TRANSITIONS
 TO EXISTING CURB HEAD HEIGHT
 REPLACE SIDEWALK TO DRAIN TO
 APPROX CENTER OF DRIVEWAY
 APRON. EXISTING CURB & STEPS
 ALONG PRIVATE PROPERTY TO REMAIN
 REMOVE EX. ASPHALT & UP TO 2" MAX OF
 EXISTING BASE COURSE. RE-COMPACT
 REMAINING BASE; INCLUDED WITH PLAN
 QTY OF EXCAVATION CUT.

MARK	REVISION	DATE	BY
	CURB GRADES & PLAN NOTES	2-15-21	JMW
Designed By: JMW	Date: 2/15/2021	3:49 PM	Scale: #####
13253			P-3

13253
 MADISON, WI
 CONTRACT NO: 8988 & 8989

E. GORHAM ST. PLAN
 E. GORHAM STREET RESURFACING
 M:\DESIGN\Projects\13253\CAD\Streets\13253_StreetPlans.dwg



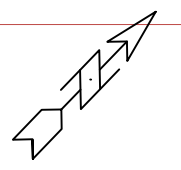


NOTE: FIELD VERIFY EXISTING STRUCTURES AND INLET ELEVATIONS

C900 PRESSURE PIPE REQUIRED WITH <8' SEPARATION FROM 8" WATER MAIN

AD-1: 2-16-2021
 REVIEW FOR PLAN CHANGES.
 SHEET U-2A ADDED WITH AD-1

0709-132-0909-9
 700 EAST II LLC
 827 E Gorham St



MARK	REVISION	DATE	BY
13253	Designed By: LAW	Date: 2/16/2021 12:29 PM	Scale: 1"=40'
2A			

13253
 MADISON, DANE COUNTY, WI
 CONTRACT NO: 8988

UTILITIES PLAN & PROFILE - E. GORHAM ST
 RESURFACING W/ STORM



13253
 U-2A

STORM SEWER SCHEDULE

AD-1 - 2/16/21

Asterisk indicates change in line item.
Bold text indicates changed columns.

RESURFACING - E. GORHAM ST.

PROJECT NO. 13253

SHEET NO.

U-5

STORM SEWER SCHEDULE

CITY OF MADISON

PROPOSED STORM STRUCTURES

STRUC. NO.	STATION	LOCATION (OFFSET)	TYPE	TOP OF CASTING	E.I.	DEPTH	NOTES
E. GORHAM ST.							
T-1 (GOR)	13+35.16	RT-12.74	TAP	-	852.09	-	TAP EX AS5047-003
S-1 (GOR)	13+11.79	RT-12.69	H INLET	856.06	852.23	3.83	W/ R-3067-7004-V
S-2 (GOR)	13+01.12	LT-29.33	3X3 SAS	856.41	853.41	3.00	FP W/ R-1550-0054 [2]
S-3 (GOR)	12+99.24	LT-23.29	H INLET	856.36	853.44	2.92	W/ R-3067-7004-V
S-4 (GOR)	13+89.33	RT-60.33	3X3 SAS	854.94	851.55	3.39	FP W/ R-1550-0054 [2]
S-5 (GOR)	13+94.26	RT-61.98	H INLET	855.21	852.85	2.36	FP W/ R-3067-7004-VB (LP)
S-6 (GOR)	32+32.63	LT-21.39	H INLET	867.54	863.14	4.40	W/ R-3067-7004-V
S-7 (GOR)	50+68.70	LT-16.89	H INLET	859.8	856.83	2.97	W/ R-3067-7004-V
T-2 (GOR)	52+34.17	LT-17.21	TAP	-	854.97	-	TAP EX IN5344-050
S-8 (GOR)	59+09.97	LT-17.27	H INLET	852.68	849.27	3.41	W/ R-3067-7004-V
T-3 (GOR)*	36+49.67	RT-18.60	TAP	-	849.35	-	TAP EX IN5245-022
S-9 (GOR)*	39+10.76	RT-11.03	3X3 SAS	852.49	849.44	3.05	FP W/ R-1550-0054
S-10 (GOR)*	37+34.39	RT-10.23	3X3 SAS	853.10	850.15	2.95	FP W/ R-1550-0054
S-11 (GOR)*	37+24.30	RT-14.83	H INLET	853.18	850.19	2.99	FP W/ R-3067-7004-VB (LP)
S-12 (GOR)*	36+86.54	RT-14.75	H INLET	853.50	850.34	3.16	W/ R-3067-7004-V

PROPOSED STORM PIPES

PIPE NO.	FROM (DNSTM)	TO (UPSTM)	DISCH. E.I.	INLET E.I.	PLAN (PAY) LGTH (FT)	PIPE LGTH (FT)	SLOPE (%)	PIPE SIZE	TYPE	NOTES
P-1 (GOR)	T-1 (GOR)	S-1 (GOR)	852.09	853.00	27	22	4.10%	12"	RCP	
P-2 (GOR)	S-3 (GOR)	S-2 (GOR)	854.60	854.70	7	4	2.42%	12"	RCP	
P-3 (GOR)	S-5 (GOR)	S-4 (GOR)	852.8	852.85	5	2	2.50%	12"	RCP	
P-4 (GOR)	AS5246-079	S-6 (GOR)	859.43	863.14	82	79	4.70%	12"	RCP	
P-5 (GOR)	S-7 (GOR)	T-2 (GOR)	854.97	856.83	167	164	1.13%	12"	RCP	
P-6 (GOR)	IN5344-056	S-8 (GOR)	849.44	849.50	20	17	0.35%	12"	RCP	
P-7 (GOR)	S-8 (GOR)	IN5344-052	849.07	849.27	23	19	1.06%	15"	RCP	
P-8 (GOR)*	T-3 (GOR)*	S-9 (GOR)*	849.35	849.44	24	21	0.44%	10"	TYPE III	[3]
P-9 (GOR)*	S-9 (GOR)*	S-10 (GOR)*	849.44	850.15	176	173	0.41%	10"	TYPE III	[3]
P-10 (GOR)*	S-10 (GOR)*	S-11 (GOR)*	850.15	850.19	11	8	0.52%	10"	TYPE III	[3]
P-11 (GOR)*	S-12 (GOR)*	S-12 (GOR)*	850.19	850.34	38	35	0.43%	10"	TYPE III	[3]

STORM STRUCTURE ADJUSTMENTS

STRUC. NO.	STATION	LOCATION (OFFSET)	TYPE	EX. TOC	PROP. TOC	DIF. (FT)	NOTES
E. GORHAM ST.							
ADJ-1	14+12.29	RT-13.45	INLET	854.93	854.94	0.01	[1]

REMOVE STORM STRUCTURES

STRUC. NO.	ID NO	STATION	LOCATION (OFFSET)	TYPE	NOTES
E. GORHAM ST.					
RS-1 (GOR)	IN5047-005	13+62.23	LT-22.60	H INLET	
RS-2 (GOR)	IN5047-004	13+17.00	RT-15.00	H INLET	
RS-3 (GOR)	IN5147-049A	14+08.96	RT-14.95	H INLET	
RS-4 (GOR)	IN5246-080	32+70.58	LT-20.68	H INLET	
RS-5 (GOR)	IN5344-055	59+10.03	LT-15.77	H INLET	

REMOVE STORM PIPES

PIPE NO.	FROM (DNSTM)	TO (UPSTM)	LGTH (FT)	PIPE SIZE	TYPE	PAID (Y/N)	NOTES
RP-1 (GOR)	EX AS5047-003	S-1 (GOR)	27	12"	RCP	Y	
RP-2 (GOR)	EX AS5047-002	S-2 (GOR)	8	12"	RCP	Y	
RP-3 (GOR)	EX AS5047-000	RS-3 (GOR)	9	12"	RCP	Y	
RP-4 (GOR)	EX AS5246-079	RS-4 (GOR)	45	12"	RCP	N	
RP-5 (GOR)	RS-5 (GOR)	EX IN5344-056	21	12"	RCP	Y	
RP-6 (GOR)	EX IN5344-052	RS-5 (GOR)	23	15"	RCP	Y	

ULO LOCATIONS

ULO NO.	STATION	LOCATION (OFFSET)	TYPE	NOTES
ULO 1	12+99.27	LT-22.31	ELEC	
ULO 2	32+79.84	LT-19.98	GAS	
ULO 3	59+22.49	LT-24.42	GAS	

SPECIFIC NOTES:

[1] Adjust inlet to match new curb line - paid under bid items 40364 and 40366

[2] Cut existing storm pipe to install new FP structure in-line

[3] Type III Storm Pressure Pipe - C900 PVC per standard spec 504.2 (f)

STANDARD NOTES:

- PLAN LENGTH (PAY LENGTH) IS FROM CENTER OF STRUCTURE TO CENTER OF STRUCTURE. PIPE LENGTH IS ACTUAL LENGTH OF PIPE FROM STRUCTURE WALL TO STRUCTURE WALL. SLOPE CALCULATED USING PIPE LENGTH.

- ABBREVIATIONS: AE = APRON ENDWALL; RCP = REINFORCED CONCRETE PIPE; HERCP = HORIZONTAL ELLIPTICAL REINFORCED CONCRETE PIPE; DNA = DOES NOT APPLY; SAS = SEWER ACCESS STRUCTURE; LP = LOW POINT INLET STRUCTURE; FP = FIELD POURED STRUCTURE; TR = TOP OF CONCRETE ROOF; NCM = NO CROWN MATCH FOR PIPES; UD = UNDERDRAIN

- APPROXIMATE DISCHARGE E.I. GIVEN, ADJUST E.I. AND PIPE SLOPE IN THE FIELD.

- TOP OF CASTING GRADE GIVEN IS THE TOP OF CURB FOR INLET STRUCTURES AND THE FLOWLINE OF THE CLOSED CASTING FOR SAS'S.

- ALL REINFORCED CONCRETE PIPES TO BE CLASS III UNLESS OTHERWISE NOTED.

- SURVEYOR TO CONFIRM THAT ALL INLET STATION / OFFSETS LINE UP WITH PROPOSED CURB AND GUTTER.

- ALL FIELD POURED SAS STORM STRUCTURES SHALL BE CONSTRUCTED IN ACCORDANCE WITH STANDARD DETAIL DRAWING 5.7.3. ALL PRECAST SAS STORM STRUCTURES SHALL BE CONSTRUCTED IN ACCORDANCE WITH STANDARD DETAIL DRAWING 5.7.5.

- ALL STRUCTURES CALLED OUT AS FIELD POURED SHALL BE FIELD POURED. ALL OTHER STRUCTURES (NOT INDICATED AS FIELD POURED) SHALL BE SUBMITTED TO CITY ENGINEERING FOR APPROVAL IF PRECAST STRUCTURES ARE PREFERRED. CONTACT LUCAS WARDELL OF CITY ENGINEERING AT (608) 243-5894 FOR PRECAST APPROVALS, FAX SHOP DRAWINGS TO (608)264-9275, OR EMAIL SHOP DRAWINGS TO LWARDELL@CITYOFMADISON.COM.